

**Crush More.
Faster. Smarter.**



Hirata

SHAKE MASTER AUTO

Distributed by **LABQUIP** www.labquipasia.com

Labquip (S) Pte Ltd 625 Aljunied Road, #03-02
Aljunied Industrial Complex, Singapore 389836
Tel: +65 6779 2266 Fax: +65 67783255
Email : roland@labquipasia.com

Labquip (M) Sdn Bhd D-01-02 Block D, Sekitar 26
Enterprise, Persiaran Hulu Selangor, Seksyen 26,
40400 Shah Alam, Selangor Darul Ehsan
Tel: +603-5614 1777, Fax: +603-5614 4969
Email : mahendran@labquipasia.com

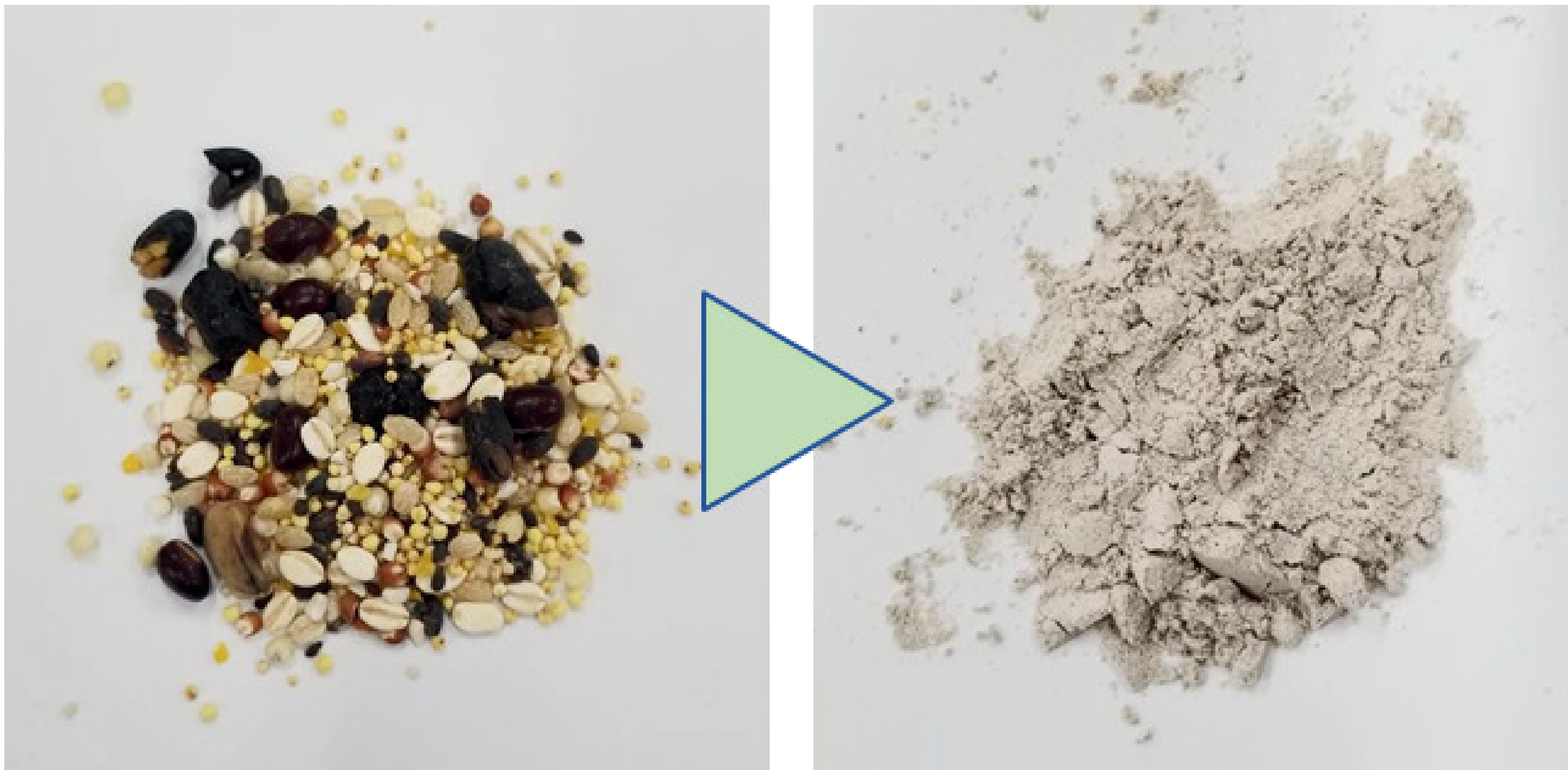
PT Labquip Indoprima Ruko Prominence RJS 38D
No.15 Alam Sutera - Serpong Tangerang 15810 -
Indonesia www.labquipindoprima.co.id Tel: 021-
29853828, 29853829
Email: gelli@labquipasia.com

Crushing/Homogenizing

About Crushing/Homogenizing

Biological samples (animals, plants, microorganisms)
Nucleic acid and protein extraction and purification
Genetic testing and vaccine development

Crushing five-grain rice



PET Crushing PET



START BY "CRUSHING/HOMOGENIZING" THE OBJECT.

Distributed by **LABQUIP** www.labquipasia.com

Labquip (S) Pte Ltd 625 Aljunied Road, #03-02
Aljunied Industrial Complex, Singapore 389836
Tel: +65 6779 2266 Fax: +65 67783255
Email : roland@labquipasia.com

Labquip (M) Sdn Bhd D-01-02 Block D, Sekitar 26
Enterprise, Persiaran Hulu Selangor, Seksyen 26,
40400 Shah Alam, Selangor Darul Ehsan
Tel: +603-5614 1777, Fax: +603-5614 4969
Email : mahendran@labquipasia.com

PT Labquip Indoprima Ruko Prominence RJS 38D
No.15 Alam Sutera - Serpong Tangerang 15810 -
Indonesia www.labquipindoprima.co.id Tel: 021-
29853828, 29853829
Email: gelli@labquipasia.com

Introducing a smarter way to crush your workload — without the hassle.

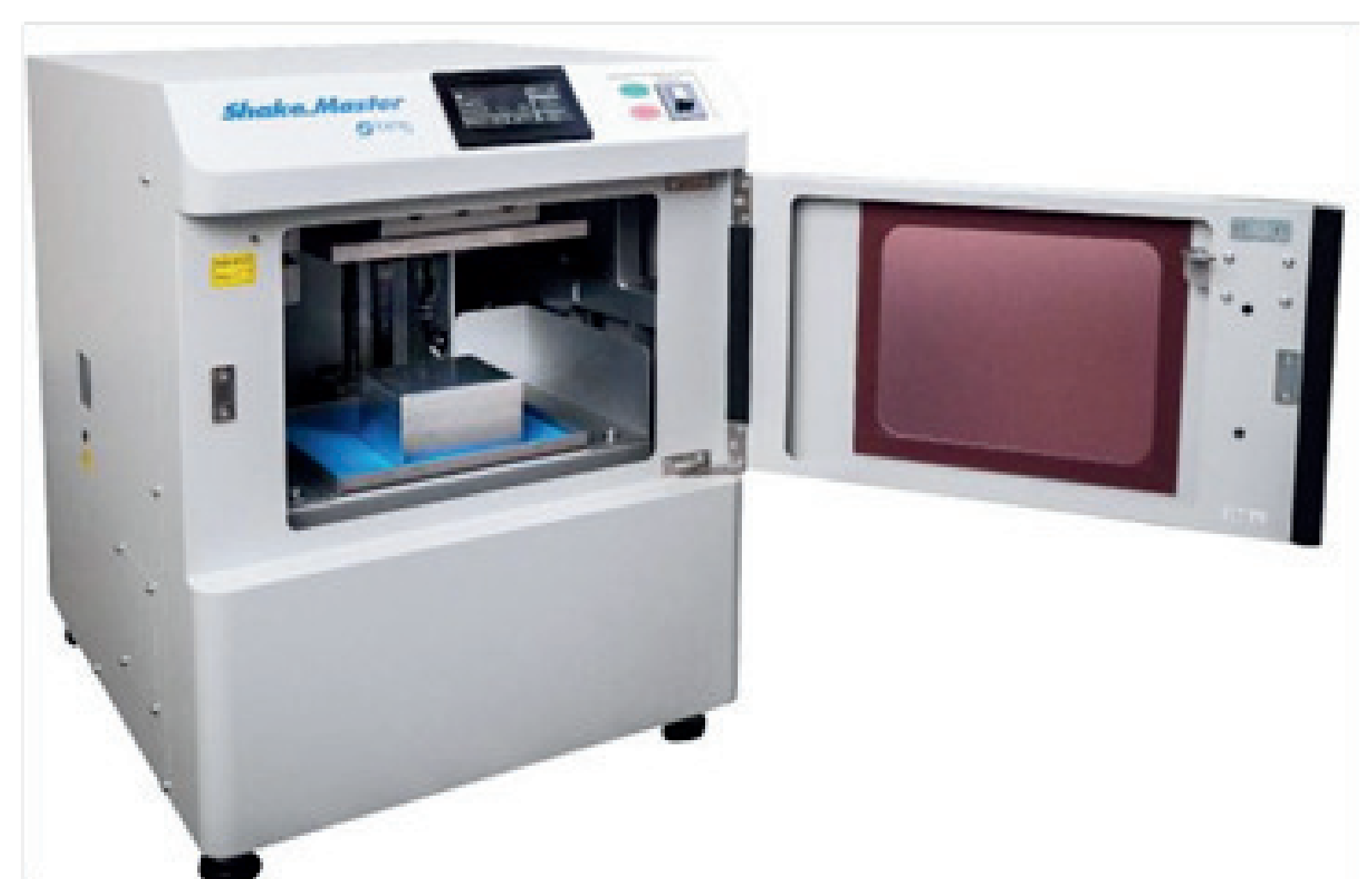
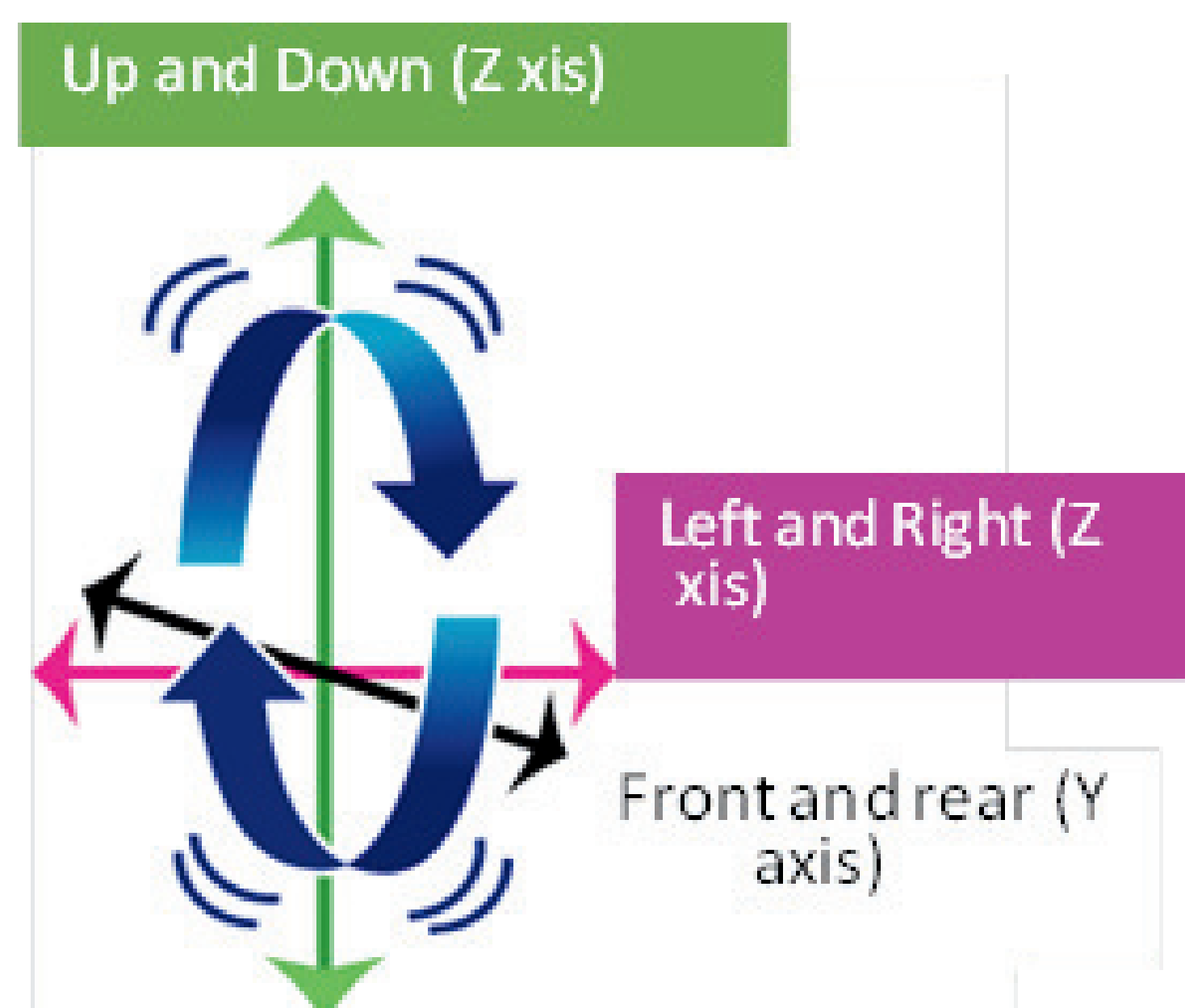


- Managing the volume and number of samples that need to be crushed
- Cleaning, drying, and sterilizing the container once the crushing process is finished

Bead-type Homogenizer (Features 1)

Three-dimensional movement (vertical elliptical three-dimensional movement)

When you pinch the rubber band and let it hang down, it forms an oval shape, and the Shake Master moves up and down in an oval shape.



Distributed by **LABQUIP** www.labquipasia.com

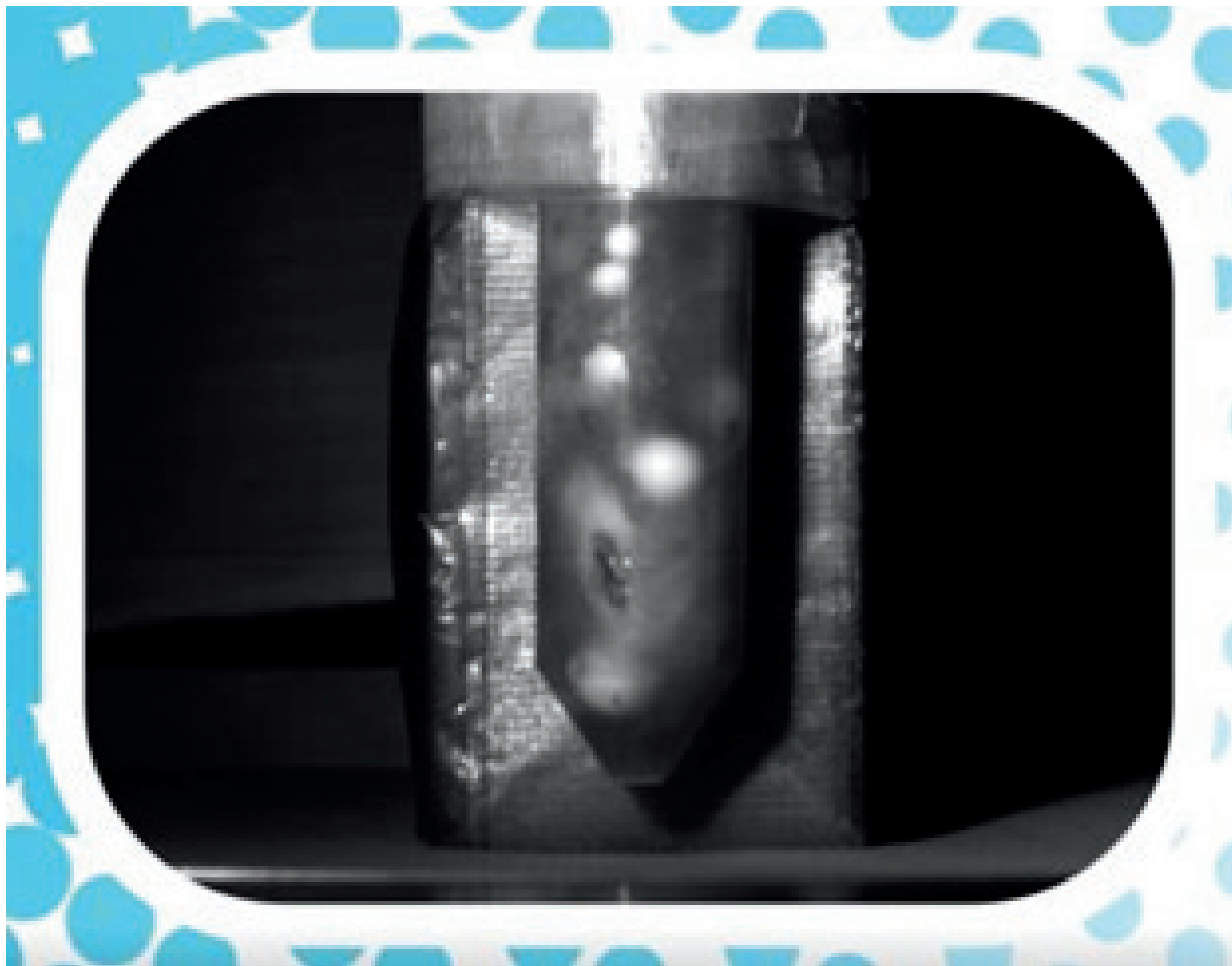
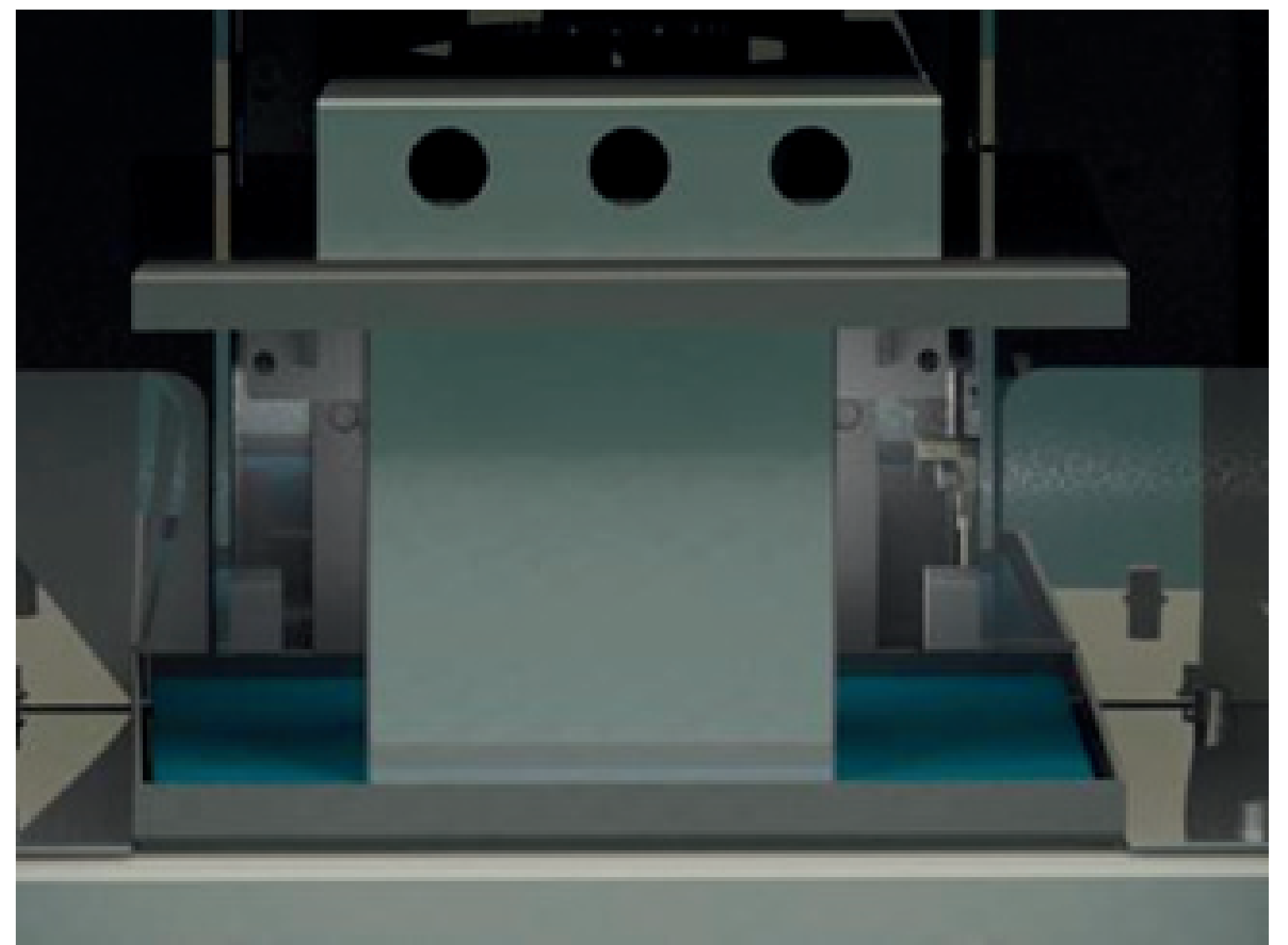
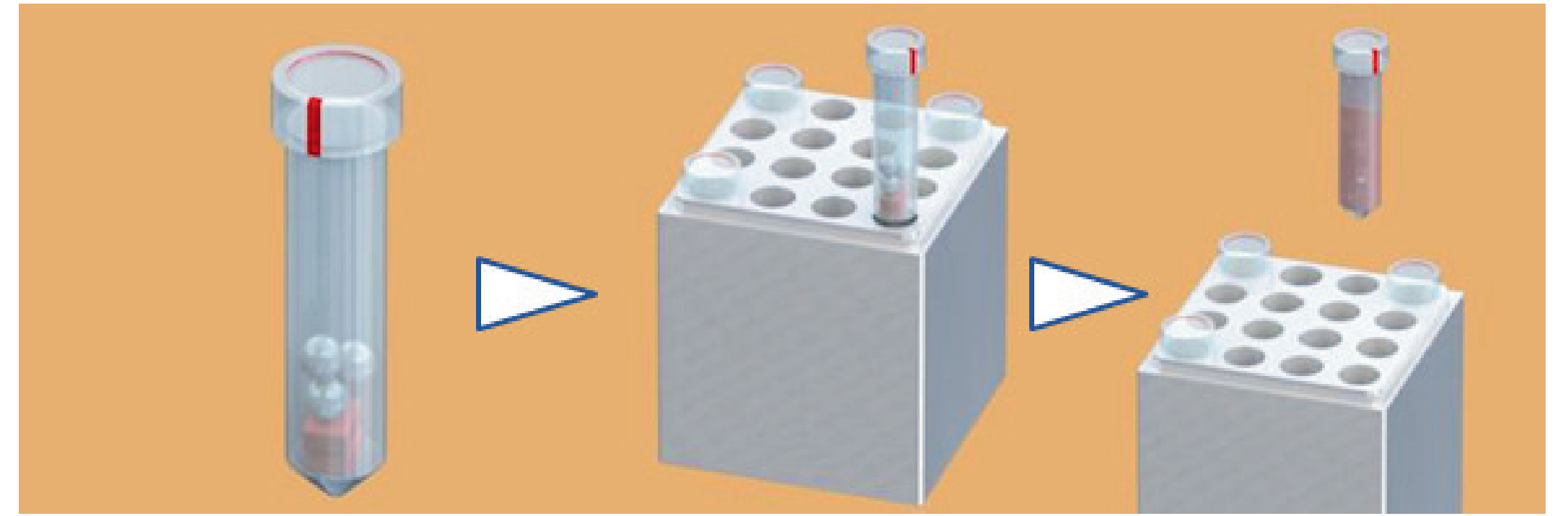
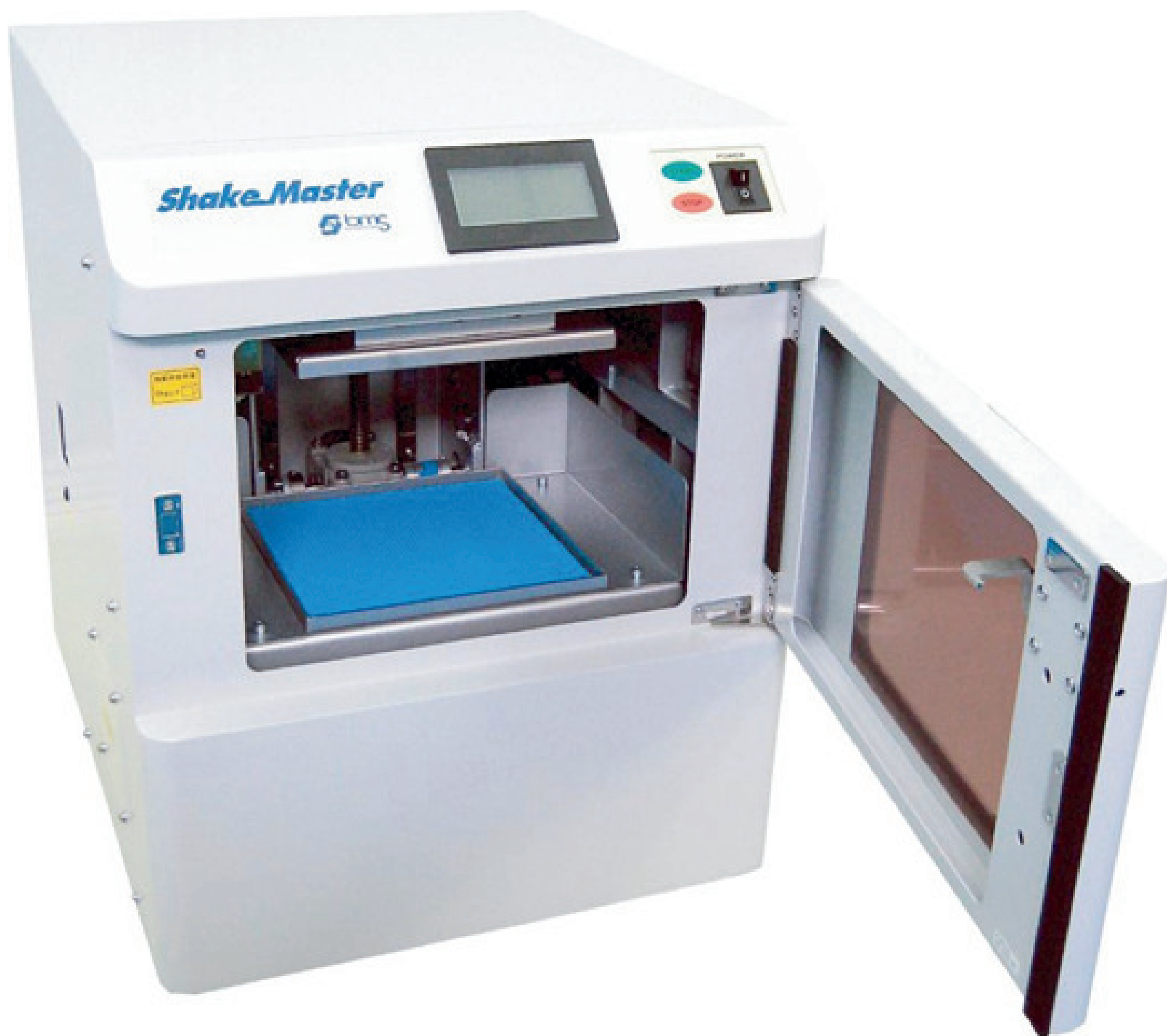
Labquip (S) Pte Ltd 625 Aljunied Road, #03-02
Aljunied Industrial Complex, Singapore 389836
Tel: +65 6779 2266 Fax: +65 67783255
Email : roland@labquipasia.com

Labquip (M) Sdn Bhd D-01-02 Block D, Sekitar 26
Enterprise, Persiaran Hulu Selangor, Seksyen 26,
40400 Shah Alam, Selangor Darul Ehsan
Tel: +603-5614 1777, Fax: +603-5614 4969
Email : mahendran@labquipasia.com

PT Labquip Indoprima Ruko Prominence RJS 38D
No.15 Alam Sutera - Serpong Tangerang 15810 -
Indonesia www.labquipindoprima.co.id Tel: 021-
29853828, 29853829
Email: gelli@labquipasia.com

Bead-type Homogenizer (Features 2)

- Uniformly crushes the sample while mixing it
- Auto clamp (automatic tightening) is easy, simple and convenient!



Distributed by **LABQUIP** www.labquipasia.com

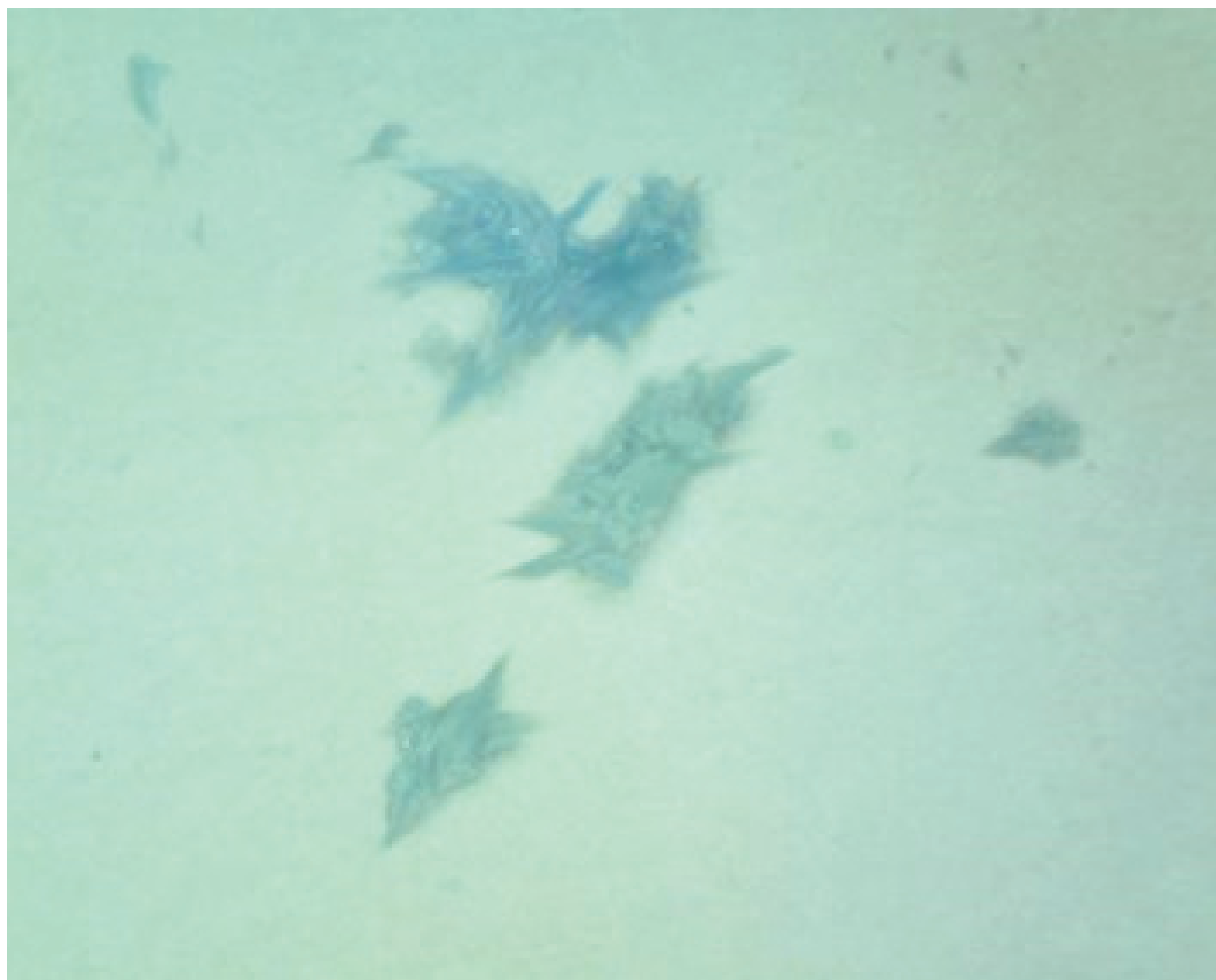
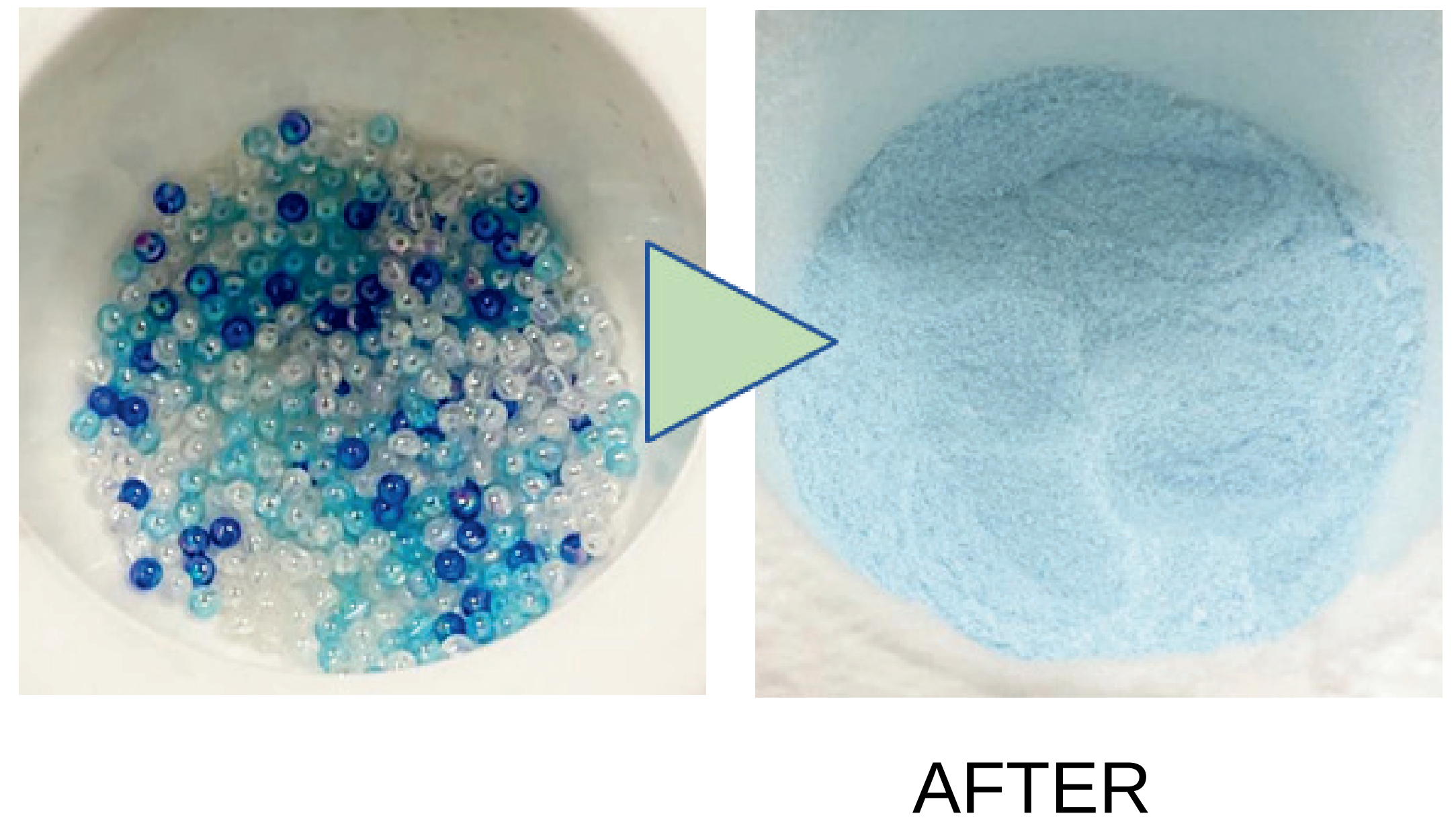
Labquip (S) Pte Ltd 625 Aljunied Road, #03-02
Aljunied Industrial Complex, Singapore 389836
Tel: +65 6779 2266 Fax: +65 67783255
Email : roland@labquipasia.com

Labquip (M) Sdn Bhd D-01-02 Block D, Sekitar 26
Enterprise, Persiaran Hulu Selangor, Seksyen 26,
40400 Shah Alam, Selangor Darul Ehsan
Tel: +603-5614 1777, Fax: +603-5614 4969
Email : mahendran@labquipasia.com

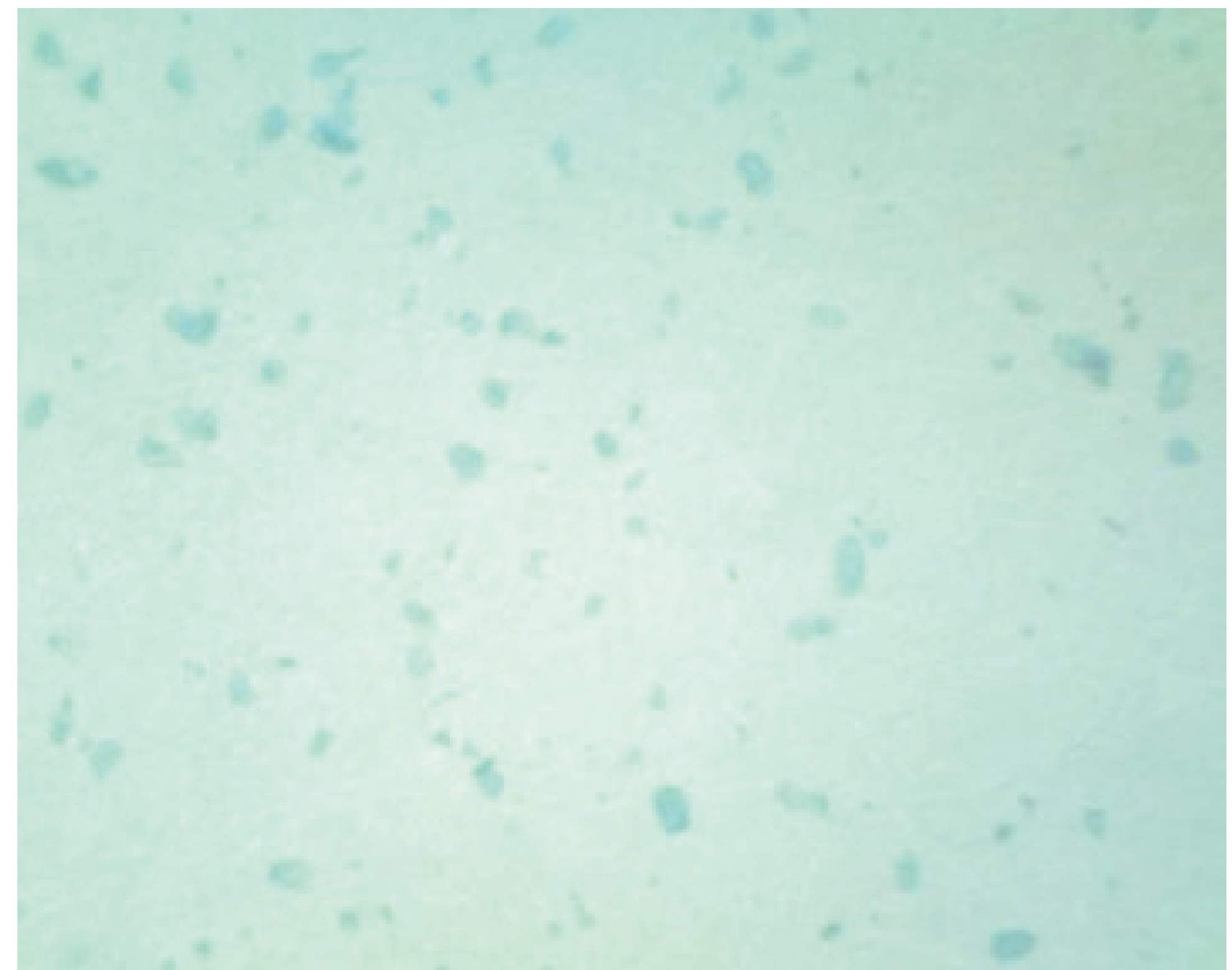
PT Labquip Indoprima Ruko Prominence RJS 38D
No.15 Alam Sutera - Serpong Tangerang 15810 -
Indonesia www.labquipindoprima.co.id Tel: 021-
29853828, 29853829
Email: gelli@labquipasia.com

Bead-type Homogenizer (Features 3)

- Freeze-fracturing using liquid nitrogen(-196°C) is possible

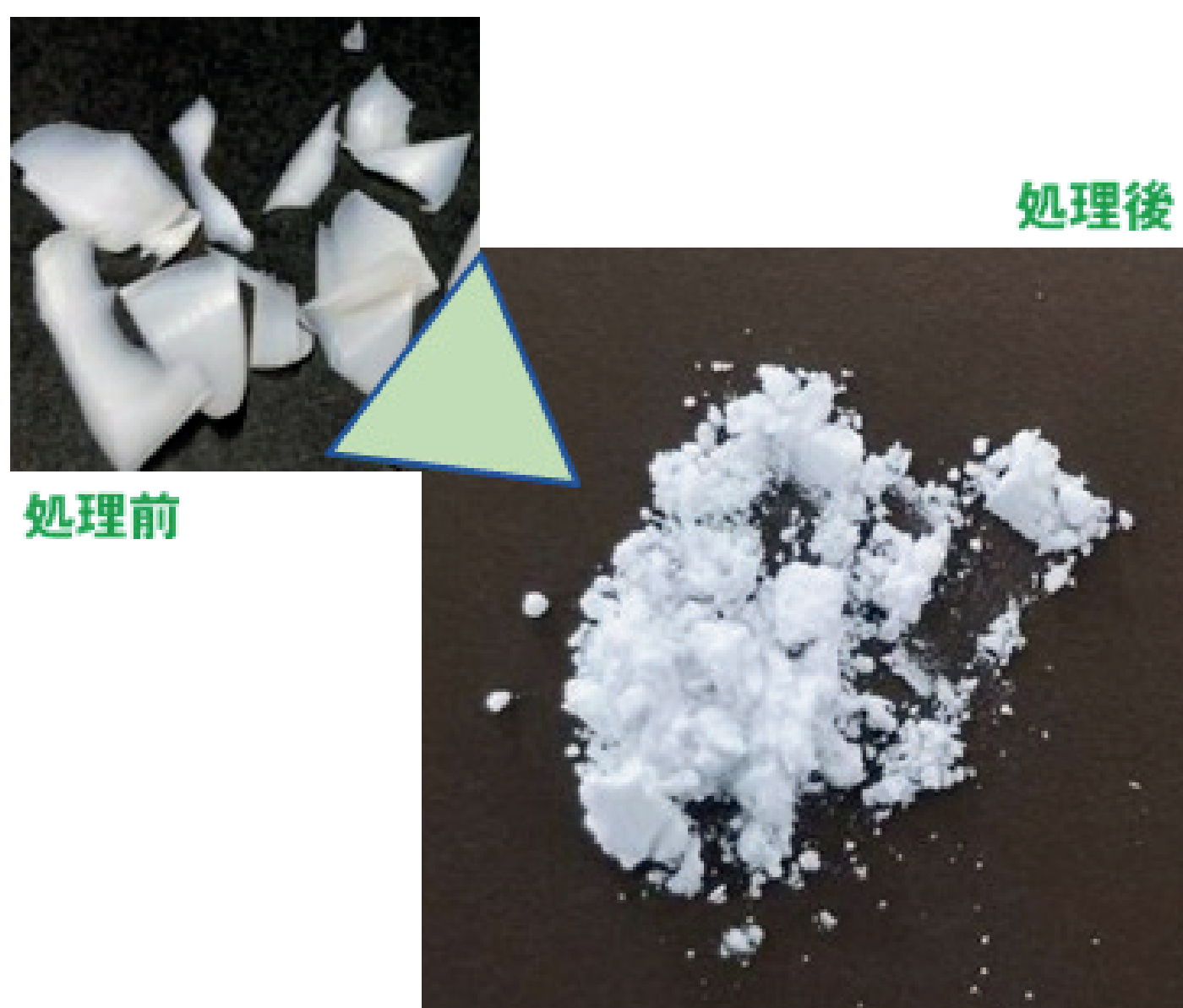


Room-temperature fracture
→ Ductile fracture (stretching and breaking)
→ Unusable



Freeze-fracturing
→ Brittle fracture (Highly fluid atomization)
→ Usable

Freeze crushing is recommended for crushing plastics and rubber.



Ultra-fine grinding to 10µm level possible!

Distributed by **LABQUIP** www.labquipasia.com

Labquip (S) Pte Ltd 625 Aljunied Road, #03-02 Aljunied Industrial Complex, Singapore 389836
Tel: +65 6779 2266 Fax: +65 67783255
Email : roland@labquipasia.com

Labquip (M) Sdn Bhd D-01-02 Block D, Sekitar 26 Enterprise, Persiaran Hulu Selangor, Seksyen 26, 40400 Shah Alam, Selangor Darul Ehsan
Tel: +603-5614 1777, Fax: +603-5614 4969
Email : mahendran@labquipasia.com

PT Labquip Indoprima Ruko Prominence RJS 38D No.15 Alam Sutera - Serpong Tangerang 15810 - Indonesia www.labquipindoprima.co.id Tel: 021-29853828, 29853829
Email: gelli@labquipasia.com

Bead-type Homogenizer (Features 4)

- It is possible to crush samples that are difficult to crush with cutter or hammer types.



Circuit boards



Rubber balloons

Crushing examples and applications Pharmaceuticals and Foods



Capsules



Supplements

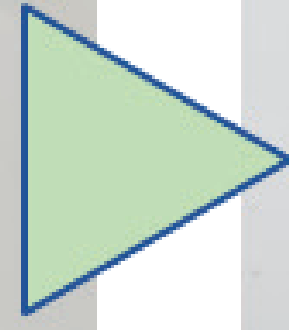
Distributed by **LABQUIP** www.labquipasia.com

Labquip (S) Pte Ltd 625 Aljunied Road, #03-02
Aljunied Industrial Complex, Singapore 389836
Tel: +65 6779 2266 Fax: +65 67783255
Email : roland@labquipasia.com

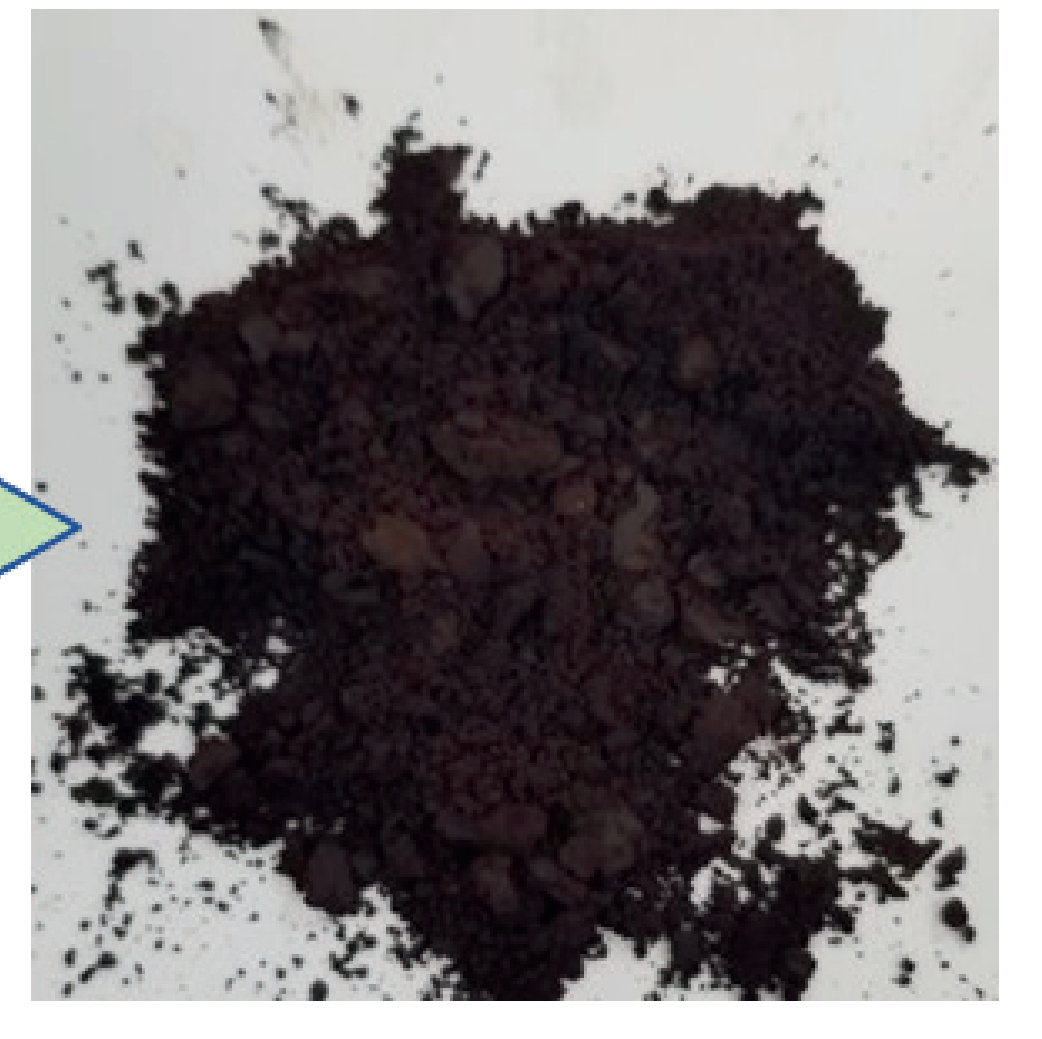
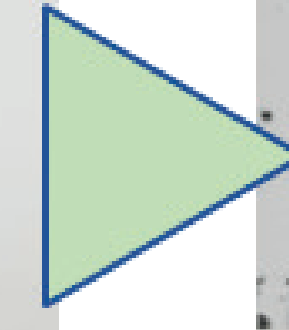
Labquip (M) Sdn Bhd D-01-02 Block D, Sekitar 26
Enterprise, Persiaran Hulu Selangor, Seksyen 26,
40400 Shah Alam, Selangor Darul Ehsan
Tel: +603-5614 1777, Fax: +603-5614 4969
Email : mahendran@labquipasia.com

PT Labquip Indoprima Ruko Prominence RJS 38D
No.15 Alam Sutera - Serpong Tangerang 15810 -
Indonesia www.labquipindoprima.co.id Tel: 021-
29853828, 29853829
Email: gelli@labquipasia.com

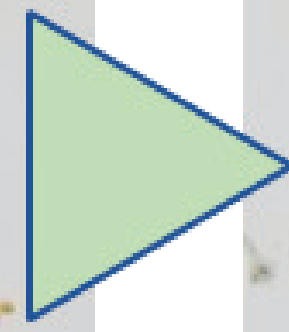
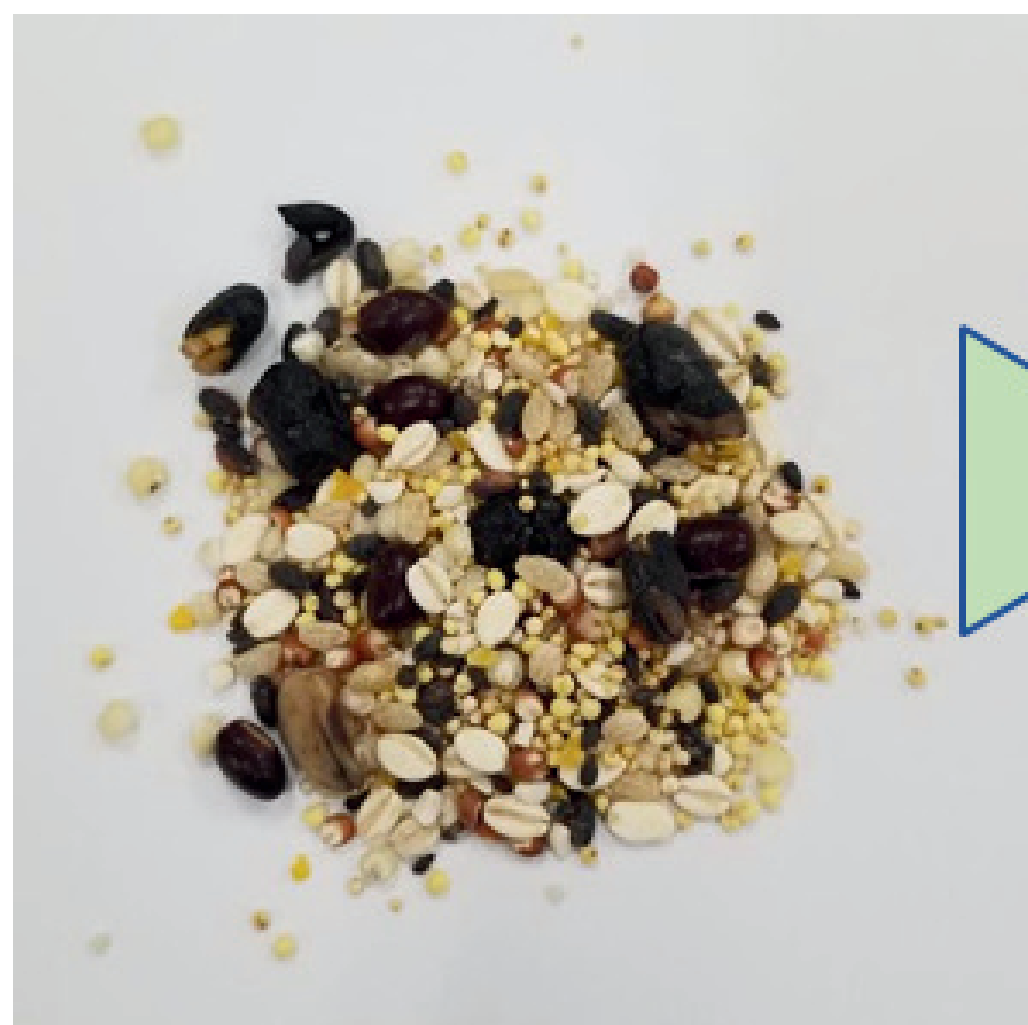
Crushing examples and applications Pharmaceuticals and Foods



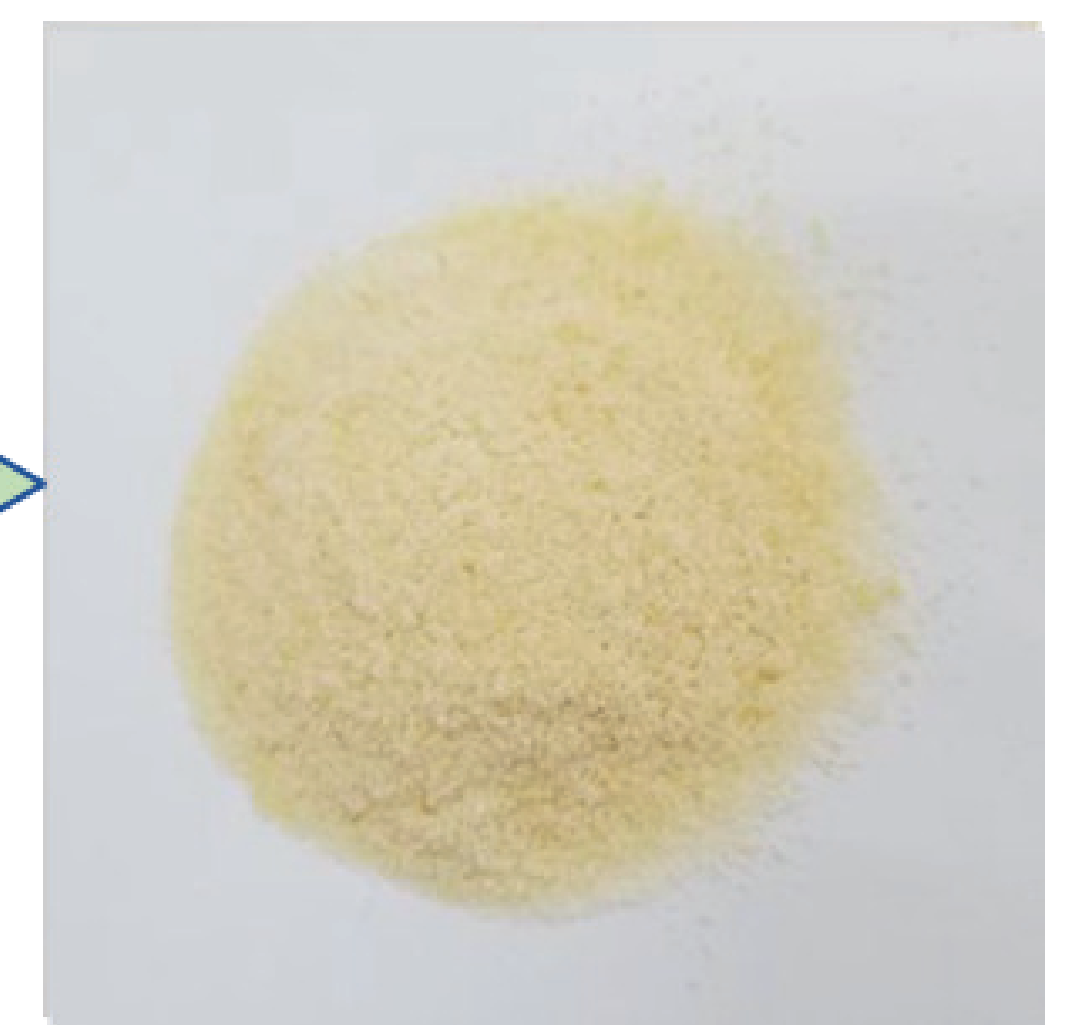
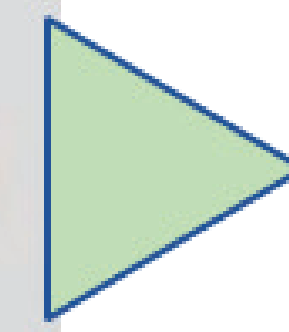
Tablet Mix



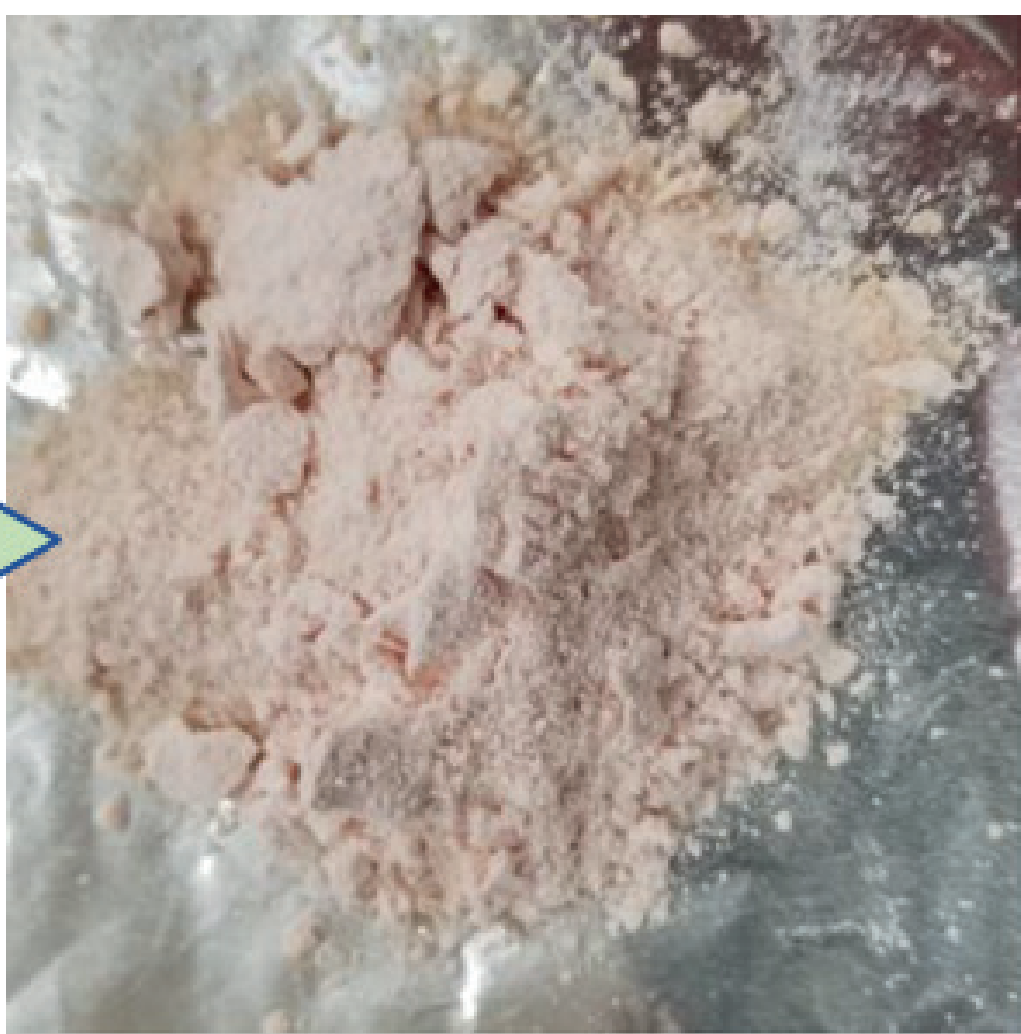
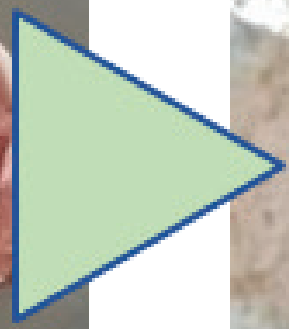
Coffee



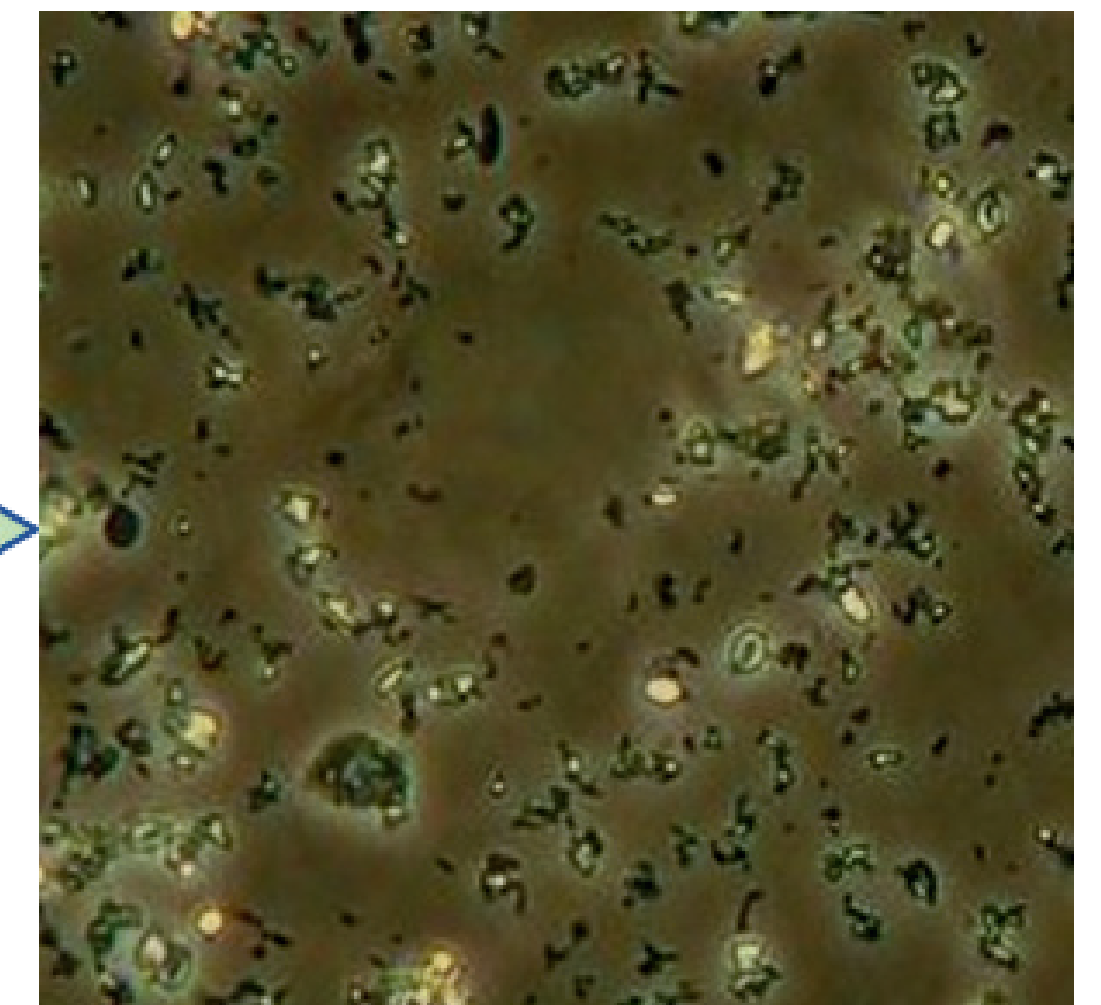
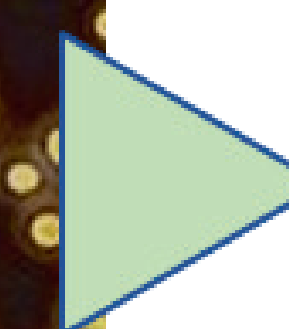
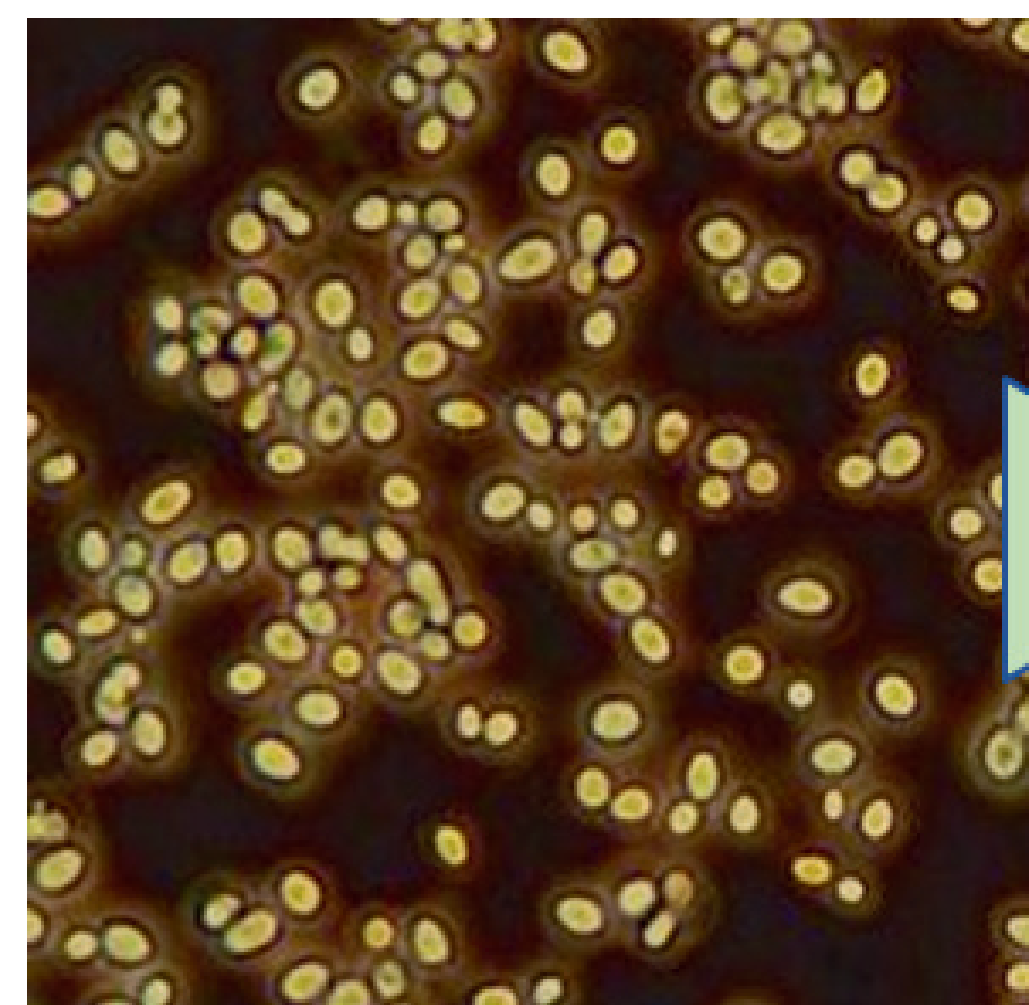
Five grain rice



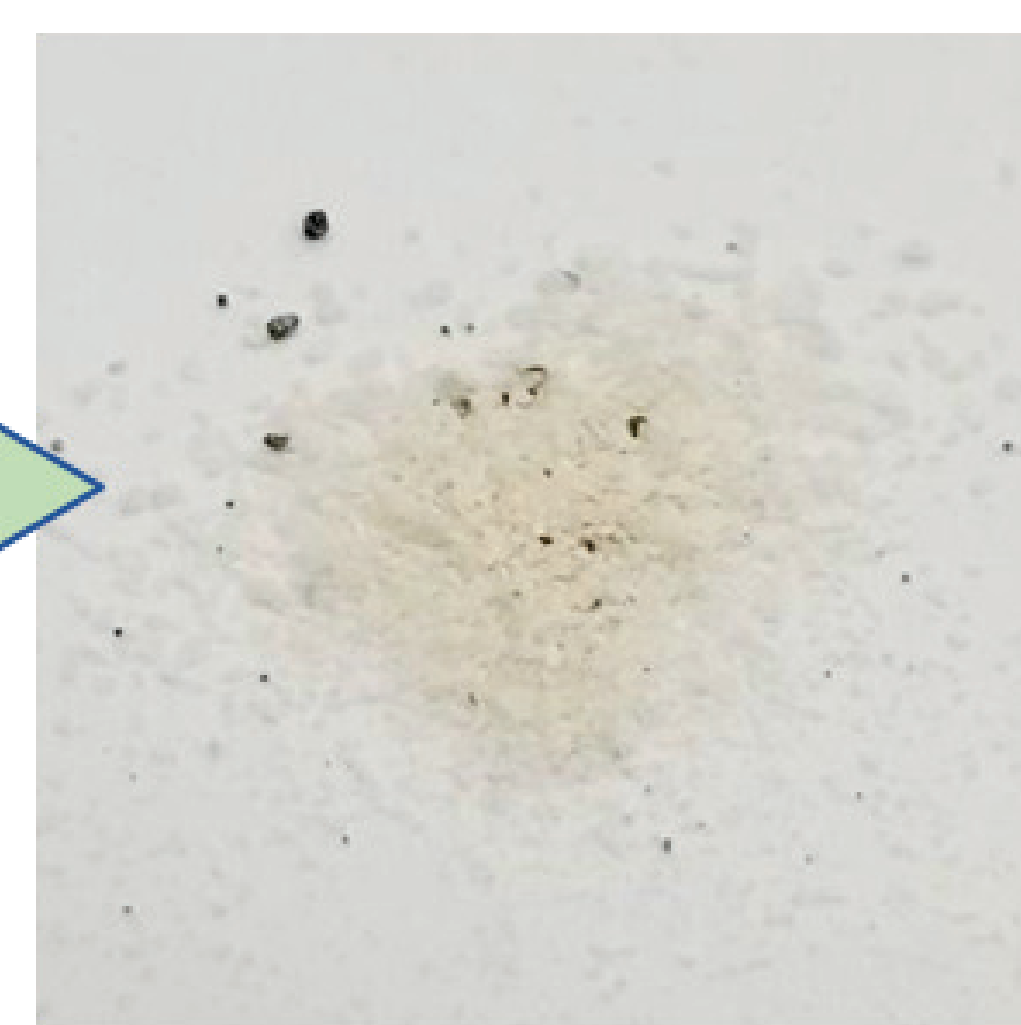
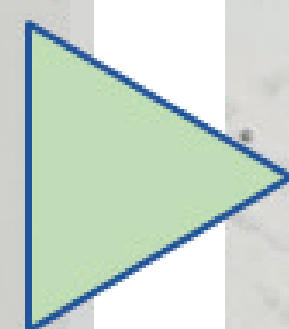
Pasta & macaroni



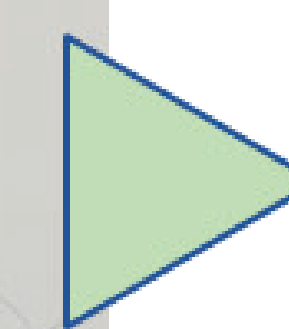
Pork



Yeast



Nail

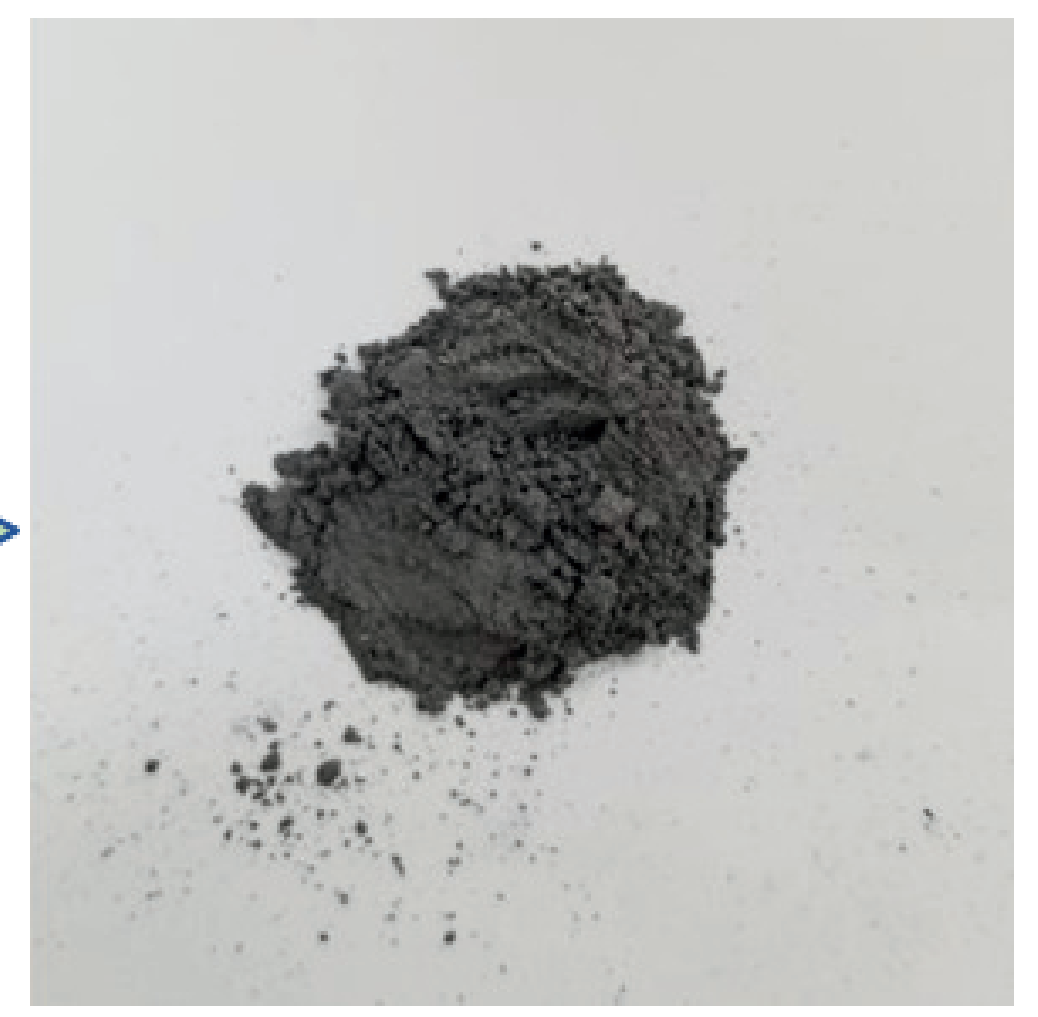


Hair

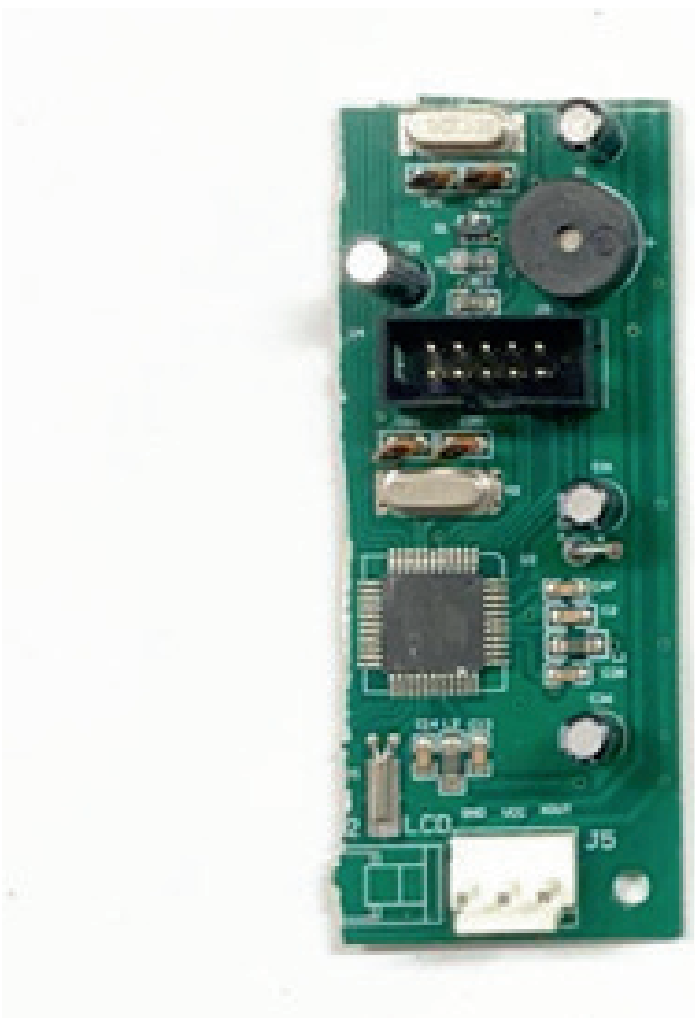
Crushing examples and applications Pharmaceuticals and Foods



Shell

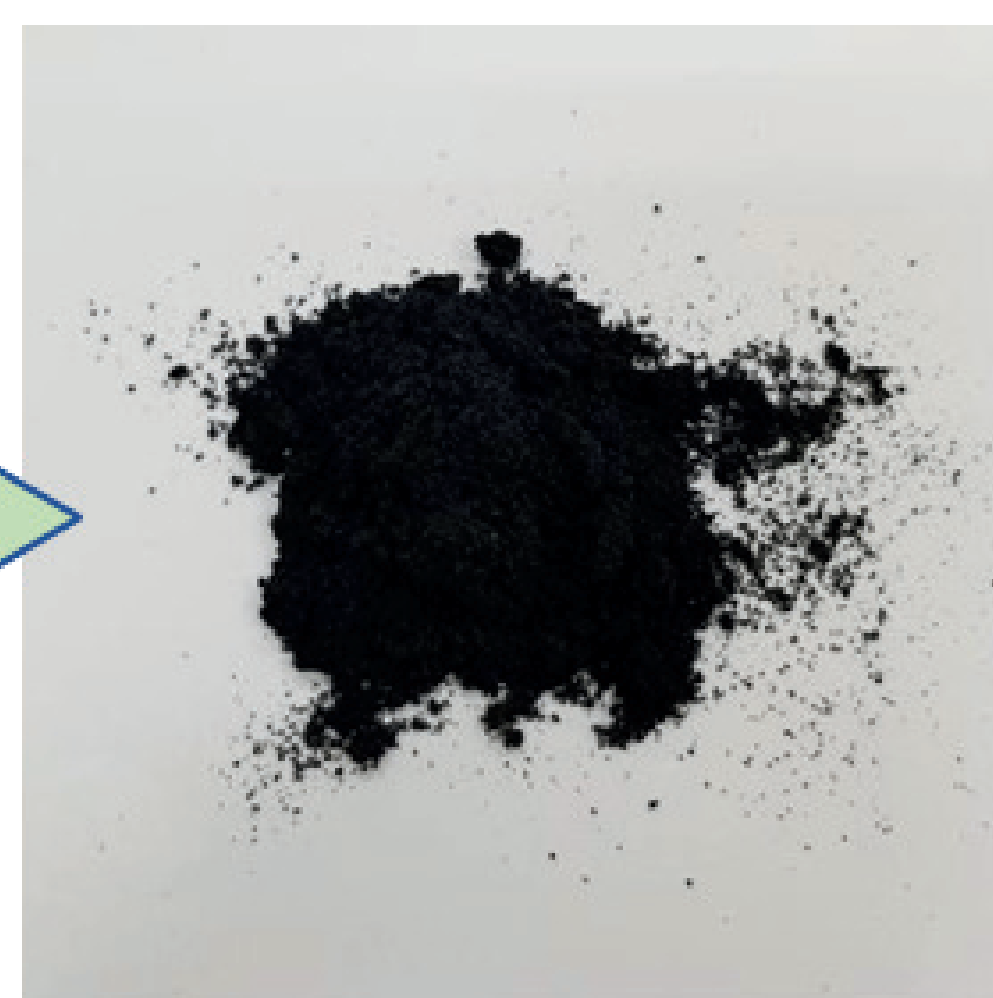
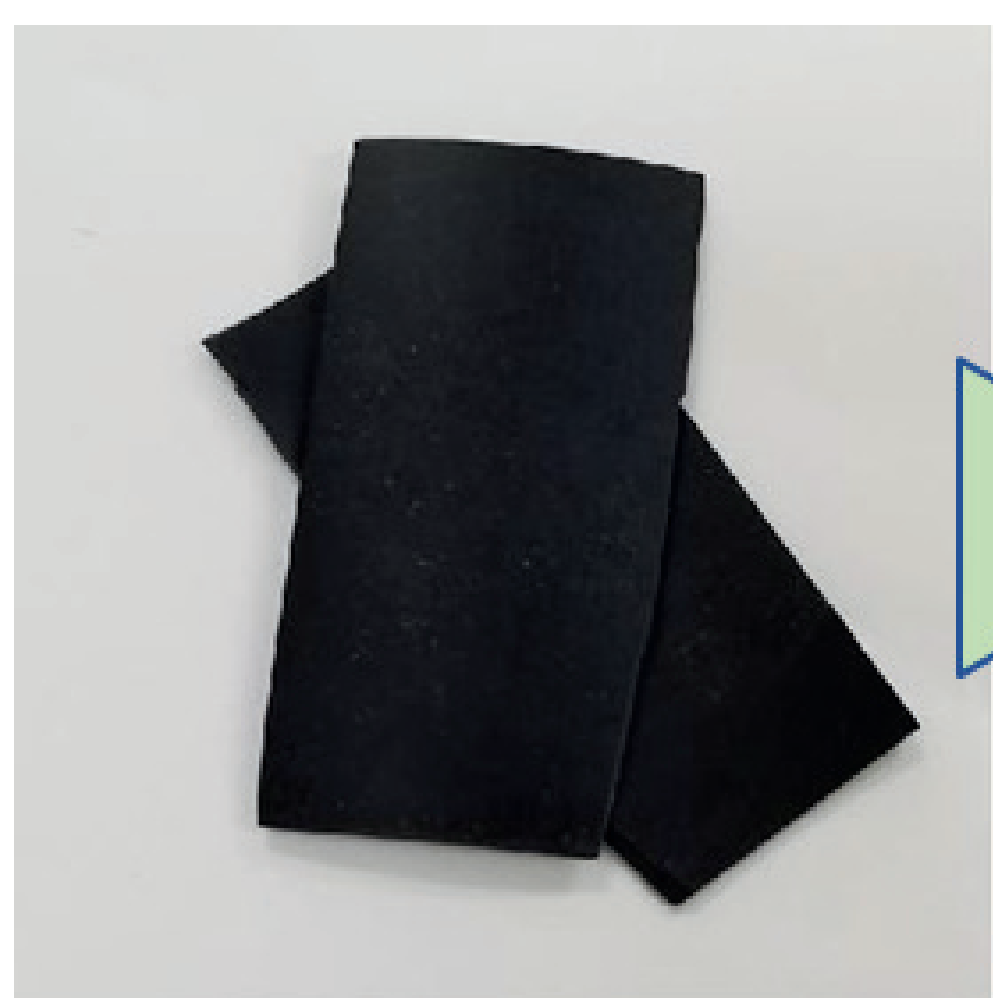


Coffee

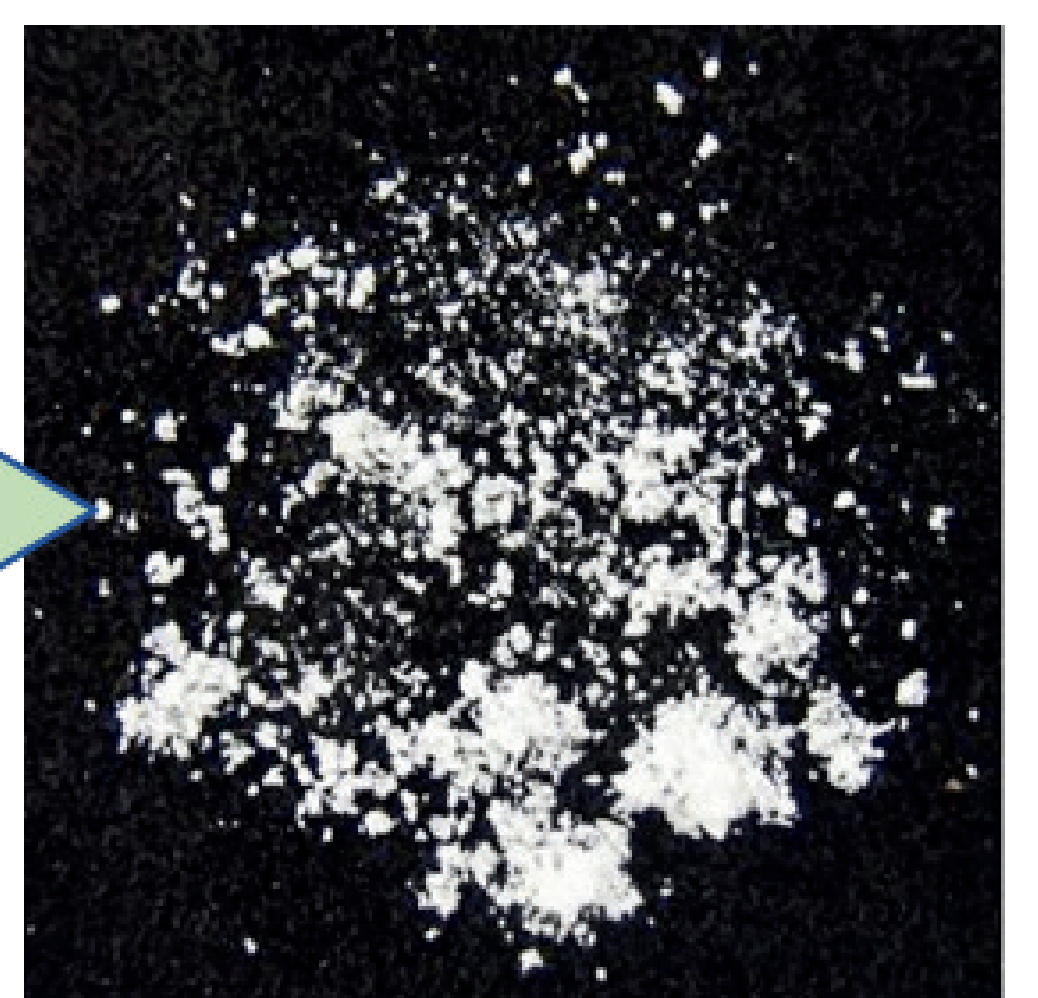


Polyvinyl chloride(PVC) → Recycled products

**Circuit boards → Check for precious metal reuse and lead contamination.
RoHS Directive: Lead content limited to 1000 ppm (0.1 wt%) or less.**

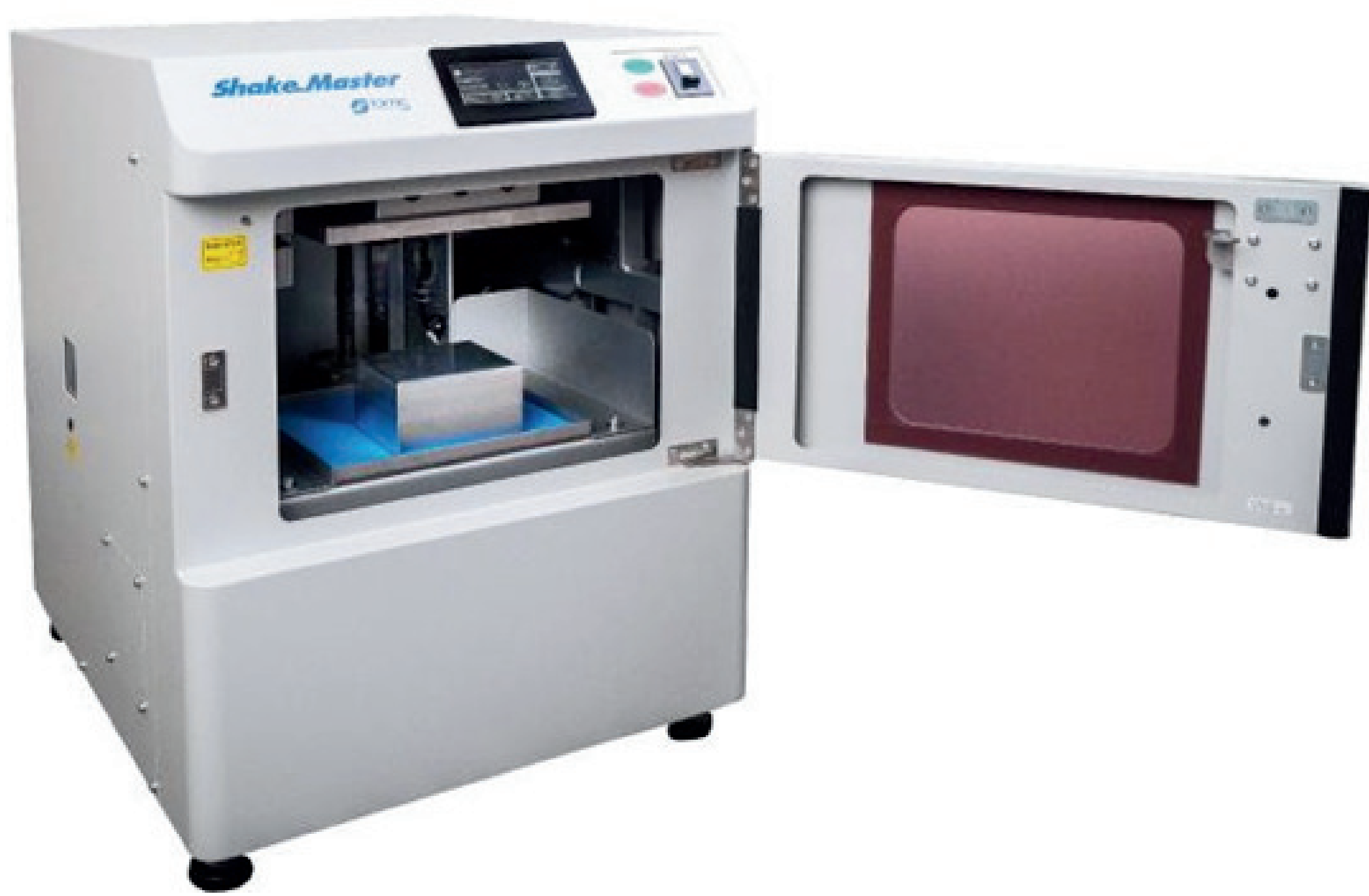


Natural rubber → New material development (mixing with other materials and solutions)



Plastic bags (polyethylene) → Recycled products

Summary



1. Bead-type crushers can crush rubber and plastic in a short time.

2. Bead-type crushers can crush even small amounts of sample efficiently and without waste.

3. Bead-type crushers can process samples within the tube, reducing the risk of contamination.

4. Bead-type crushers can crush multiple samples simultaneously, significantly reducing the time required.

Functions

- Extremely convenient for crushing, stirring, dispersing, emulsifying samples
- Simultaneous processing of multiple samples and large quantities of samples eliminates the hassle of preprocessing



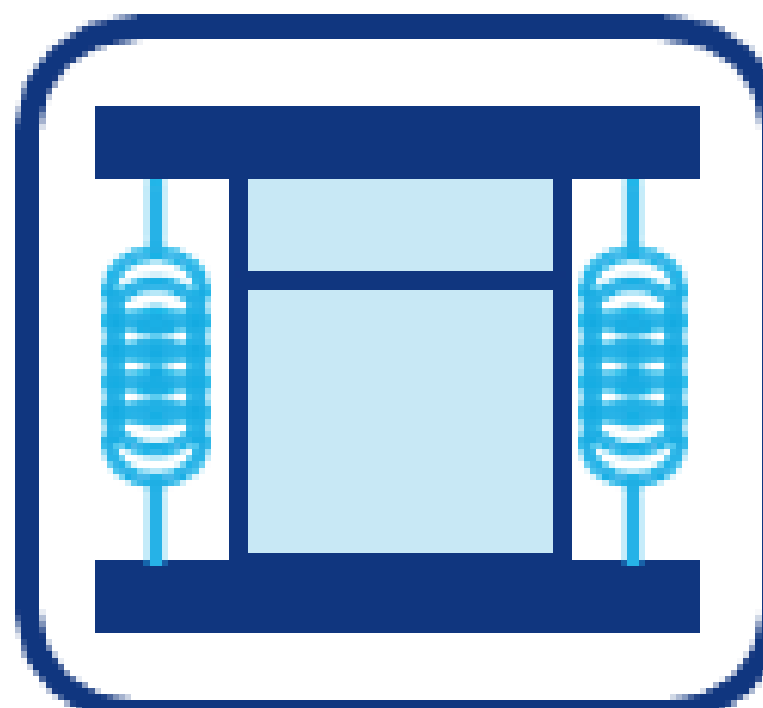
3D homogenizer
Rotational movement to the XYZ axes!
Homogeneously crushed



Crush in frozen state using liquid nitrogen!



No mortar or pestle required.



Auto clamp One-touch Operation



Continuous operation for long periods of time (~ 59 min 59 sec)



Simultaneous crushing of 384 samples



Variety of Containers 1.5ml tube ~ 1000ml container

Specification

Vibration frequency : 450~1,100 rpm
Time setting Program: 1 sec to 59 min 59 sec.
10 free /5 intermittent settings
Size: W 470 x D 582 x H 610 mm
Weight: 104 kg
Power supply: AC110V or 240V, 50/60Hz, 10A
Installation: floor

Distributed by **LABQUIP** www.labquipasia.com

Labquip (S) Pte Ltd 625 Aljunied Road, #03-02
Aljunied Industrial Complex, Singapore 389836
Tel: +65 6779 2266 Fax: +65 67783255
Email : roland@labquipasia.com

Labquip (M) Sdn Bhd D-01-02 Block D, Sekitar 26
Enterprise, Persiaran Hulu Selangor, Seksyen 26,
40400 Shah Alam, Selangor Darul Ehsan
Tel: +603-5614 1777, Fax: +603-5614 4969
Email : mahendran@labquipasia.com

PT Labquip Indoprima Ruko Prominence RJS 38D
No.15 Alam Sutera - Serpong Tangerang 15810 -
Indonesia www.labquipindoprima.co.id Tel: 021-
29853828, 29853829
Email: gelli@labquipasia.com